

**Handout (Part B) :** Team Name : .....

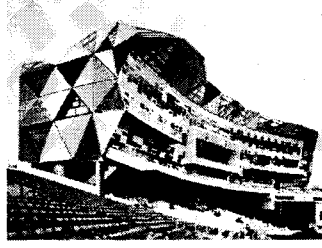
Name the following : Landmarks / Places of Interest / Sporting Venues (all in Great Britain : some local / some further away)

There will be a spot prize for the highest score on this sheet. If scores are level the winner will be decided by a tie-breaker question (the nearest will win the prize)

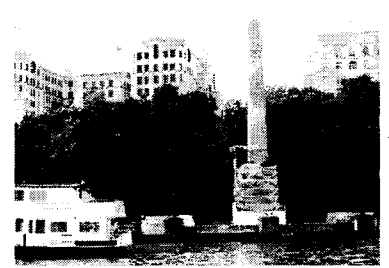
In metres, how high is the stack of sandstone depicted in picture 15 : Answer 137 metres / 449 feet



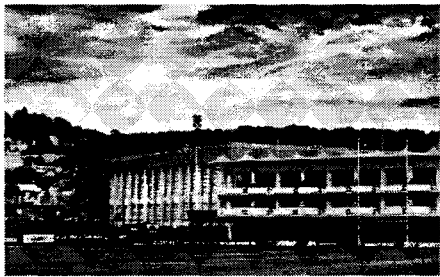
1. THE NEEDLES, IOW



2. HEADINGLEY CARNEGIE CRICKET GROUND



3. CLEOPATRA'S NEEDLE



4. BATH RECREATION GROUND



5. DURDLE DOOR



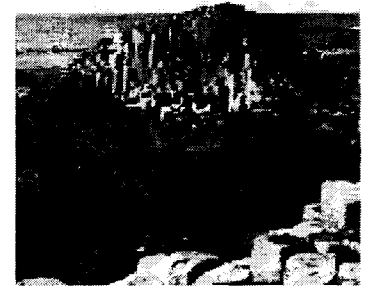
6. HAMPTON COURT



7. FINGAL'S CAVE



8. CHESTERFIELD CHURCH



9. GIANTS CAUSEWAY



10. COLSTON HALL, BRISTOL



11. QUEEN'S TENNIS CLUB, LONDON



12. CABOT TOWER, BRISTOL



13. WURST HAM LTD  
BOLTON GROUND, UPTON PK



14. THE NAILS, CORN STREET



15. OLD MAN OF HOY